

Batch Mixer



High-Speed Mixer SMW

KTM - Conditioner - Drier - Mixer

The high-speed mixer excels by very short batch processing times (complete mixing within 20 - 90 seconds). Its design ensures easy cleaning of the mixer, complete product discharge, and perfect hygiene.

"All-In-One"

- Mixing
- Steam conditioning
- Drying / cooling in batch operation

Possibility of liquid addition

- Depending on the product

Food sector:

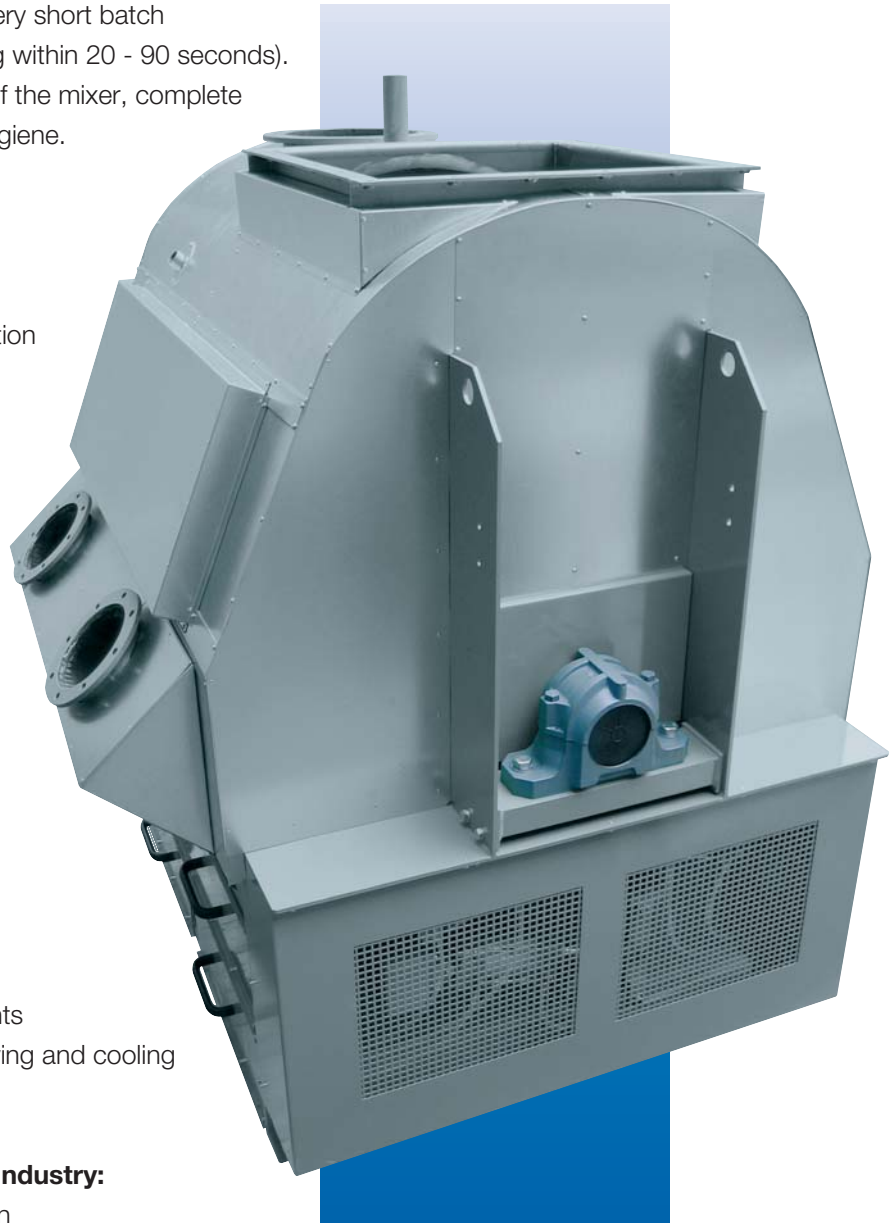
- Spice industry
- Tea industry
- Cereal and snack industry
- Grinding and baking industry
- Manufacturers of instant soups and sauces

Feed sector:

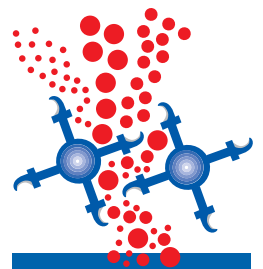
- Batch mixing
- Mycotoxin treatment (DON)
- Hygienic treatment + drying + admixing of micro-components
- Bypass-protein treatment + drying and cooling
- Fish-feed pellets

Chemical and pharmaceutical industry:

- Enzyme and additive production
- Detergents
- Recovery / recycling
- Pharmaceutical products
- And many other applications ...



Batch mixer



The programme includes different sizes for small, medium, and large production capacities

Batch Mixer

High-Speed Mixer SMW

Design criteria

The contents of the batch mixers are indicated in litres of useable volume,

- e.g. 1,000 l contents in kg
= useable volume x bulk density
- e.g. 1,000 l x 0.5 t/m³ = 500 kg

Filling degree Minimum 20 %
Maximum 120 %
The useable volume of a mixer is abt. 70 - 80 % of the gross volume

Construction sizes: 100, 500, 1000, 2000, 3000, 4000

Mixing tools: Adjustable mixing paddles arranged on a shaft

Case: Diameter / length of the mixing chamber in a ratio of 1:1

Material: St 37-2 or stainless steel, product-contacting parts in 1.4301 design possible

Bearings: Exterior pillow block

Outlet: Electro-pneumatically operated bottom flap over the complete mixer length

Drive: Slip-on geared motor

Connections

Inspection opening: – In the mixing drum, protected by limit switch
– In the outlet case, protected by limit switch

Compressed air: Installed ready for connection, incl. maintenance unit

Options: Clean air for drier and cooler, crusher, tulip-shaped knives, liquid nozzles, steam nozzles, trace heating, batch mixer



SMW 1000, insulated

Replaceable paddles



Mixer interior with ventilation openings and double bottom flap



AMANDUS KAHL GmbH & Co. KG

Dieselstrasse 5-9

D-21465 Reinbek / Hamburg

Phone: +49 (0)40 727 71 - 0

Fax: +49 (0)40 727 71 - 100

info@amandus-kahl-group.de

www.akahl.de