



## KAHL Wood Pelleting Plants

# We adjust to a better quality

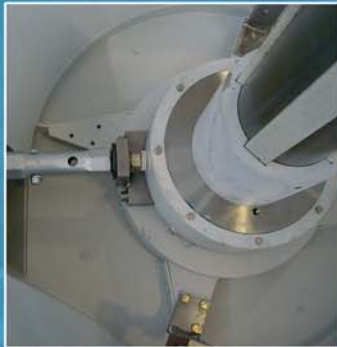
### Pan grinder head with guide plates

for exact product distribution



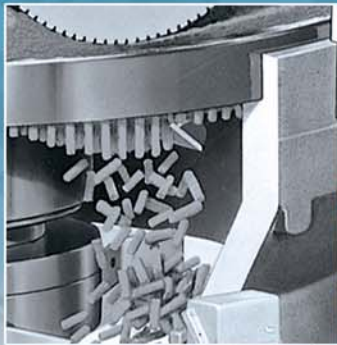
### Pan grinder head stop

for optimum adjustment of rollers and die



### Cutting device

for smooth edges and less fines



## Presses from KAHL: Construction of heavy machinery pays off



**AMANDUS KAHL GmbH & Co. KG**  
Dieselstrasse 5-9 · D-21465 Reinbek / Hamburg  
Telephone: +49 (0)40 727 71 - 0 · Fax: +49 (0)40 727 71 - 100  
info@amandus-kahl-group.de  
[www.akahl.de](http://www.akahl.de)